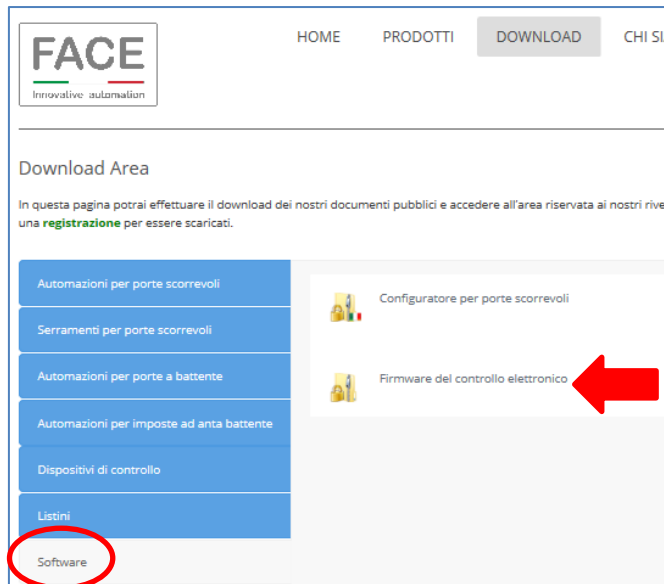


1) Scaricare il Firmware del controllo elettronico aggiornato, disponibile nel sito www.facespa.it nell'area Download.



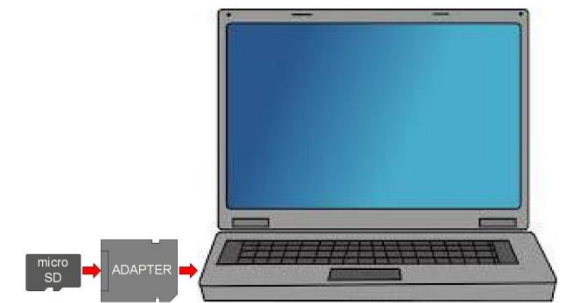
2) Scrivere Username e Password.



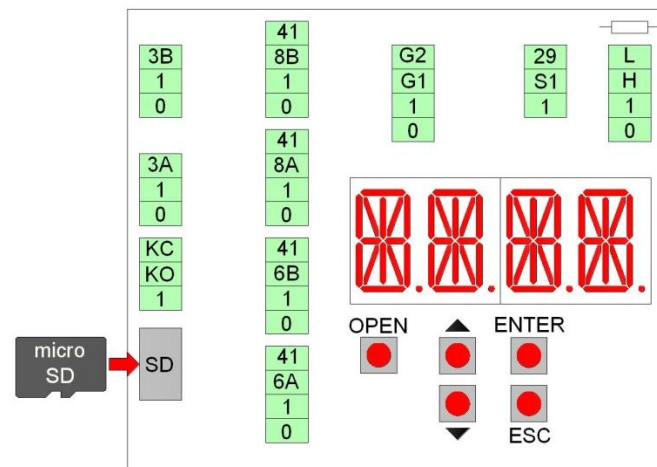
3) Estrarre dal file "BFDS-face.zip" la cartella "BFDS".



4) Copiare la cartella "BFDS" in una memoria micro SD (non in sottocartella).



5) Inserire la memoria micro SD nel controllo elettronico.



6) Dal menù MEM > FW scegliere la versione firmware desiderata.

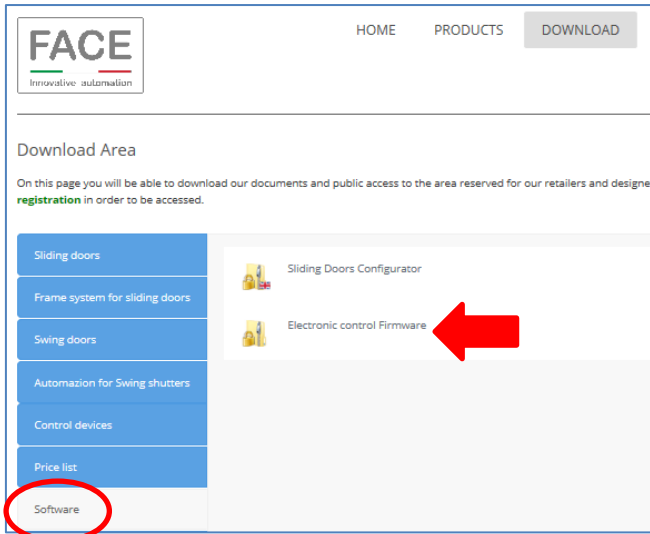
Premere il tasto ENTER fino a quando inizia la procedura di programmazione della durata di circa 30 secondi (oppure circa 2 minuti per automazioni Emergency), al termine compare la scritta "SAVE".

Al termine della procedura, estrarre la memoria micro SD dal controllo elettronico e conservarla per usi futuri.

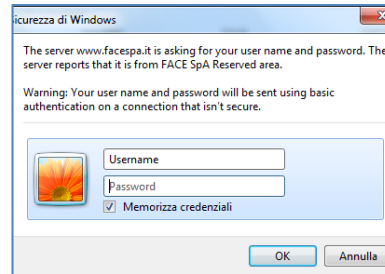
N.B. In caso di errore di programmazione o firmware mancante (W100, W104), procedere come segue:

- togliere alimentazione,
- inserire la memoria micro SD,
- dare alimentazione,
- la procedura di programmazione si avvia automaticamente, oppure scegliere il firmware dal menù MEM > FW.

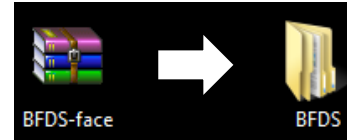
1) Download the Electronic control Firmware, available at www.facespa.it in Download area.



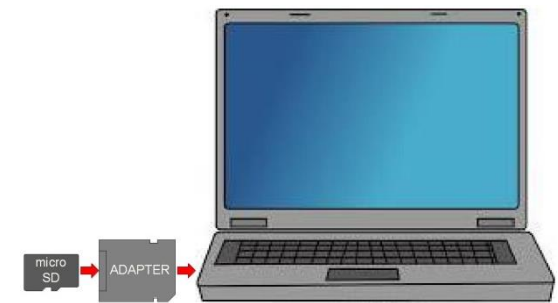
2) Write Username and Password.



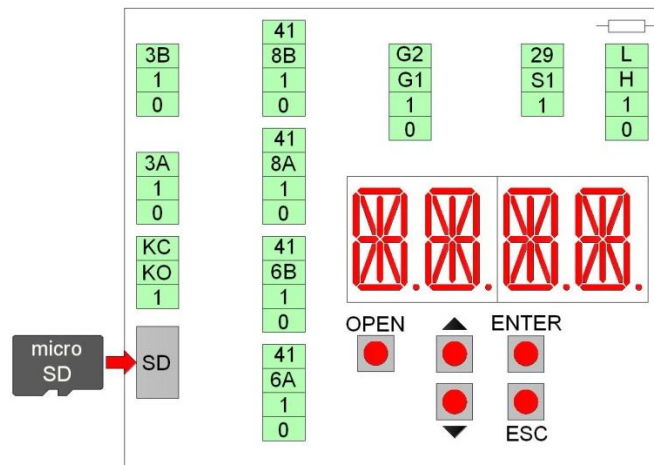
3) Extract the "BFDS" folder from the "BFDS-face.zip" file.



4) Copy the "BFDS" folder into a micro SD memory (not in subfolder).



5) Insert the micro SD memory in the electronic control.



6) From MEM > FW menu, choose the firmware version you want.

Press ENTER until it starts the programming procedure that lasts about 30 seconds (or about 2 minutes for Emergency automations), at the end the display shows "SAVE".

After the procedure, remove the micro SD memory from the electronic control and store it for future use.

Note: in the case of programming error or missing firmware (W100, W104), proceed as follows:

- disconnect the power supply,
- insert the micro SD memory,
- give power supply,
- the programming procedure starts automatically, or choose the firmware from MEM > FW menu.